

2024-2026

COBALT & COPPER CATHODES





COPPER CATHODES

**Inspected & Certified
material**

**The minimum purity level of
our materials is 99.97%.**

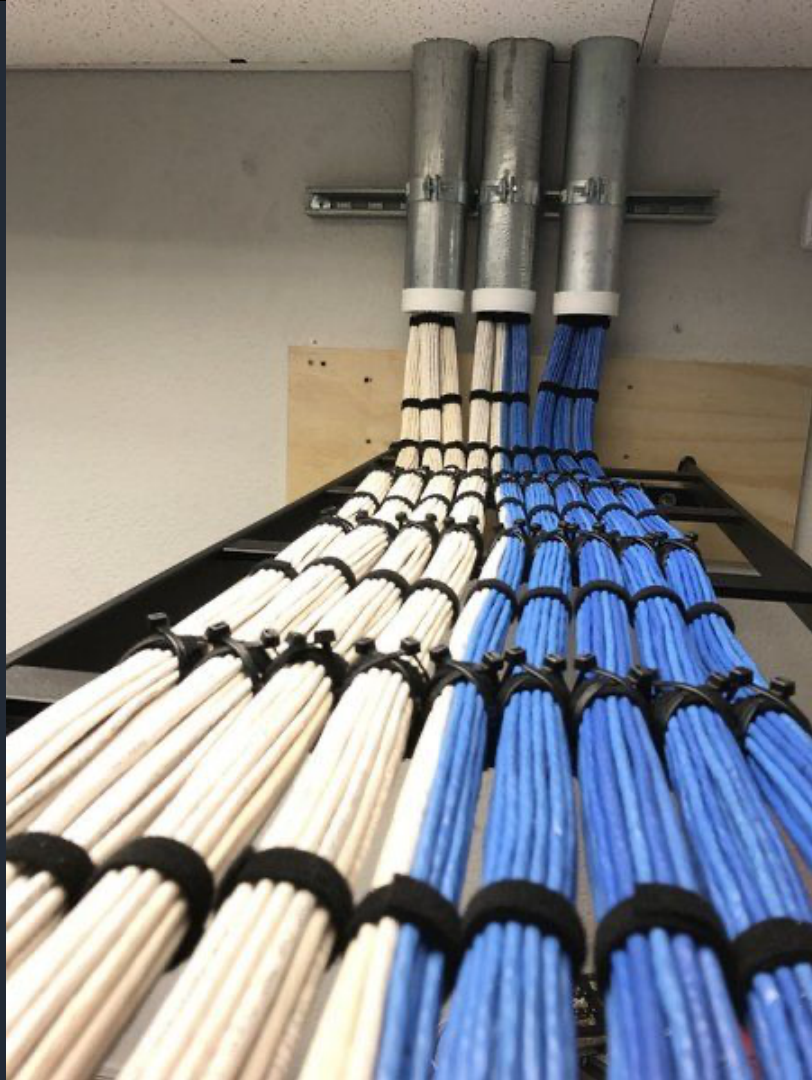
**Our product originates
directly from the
Democratic Republic of
Congo (DRC)**



APPLICATION OF OUR PRODUCT



Electric Cables



Copper Rods



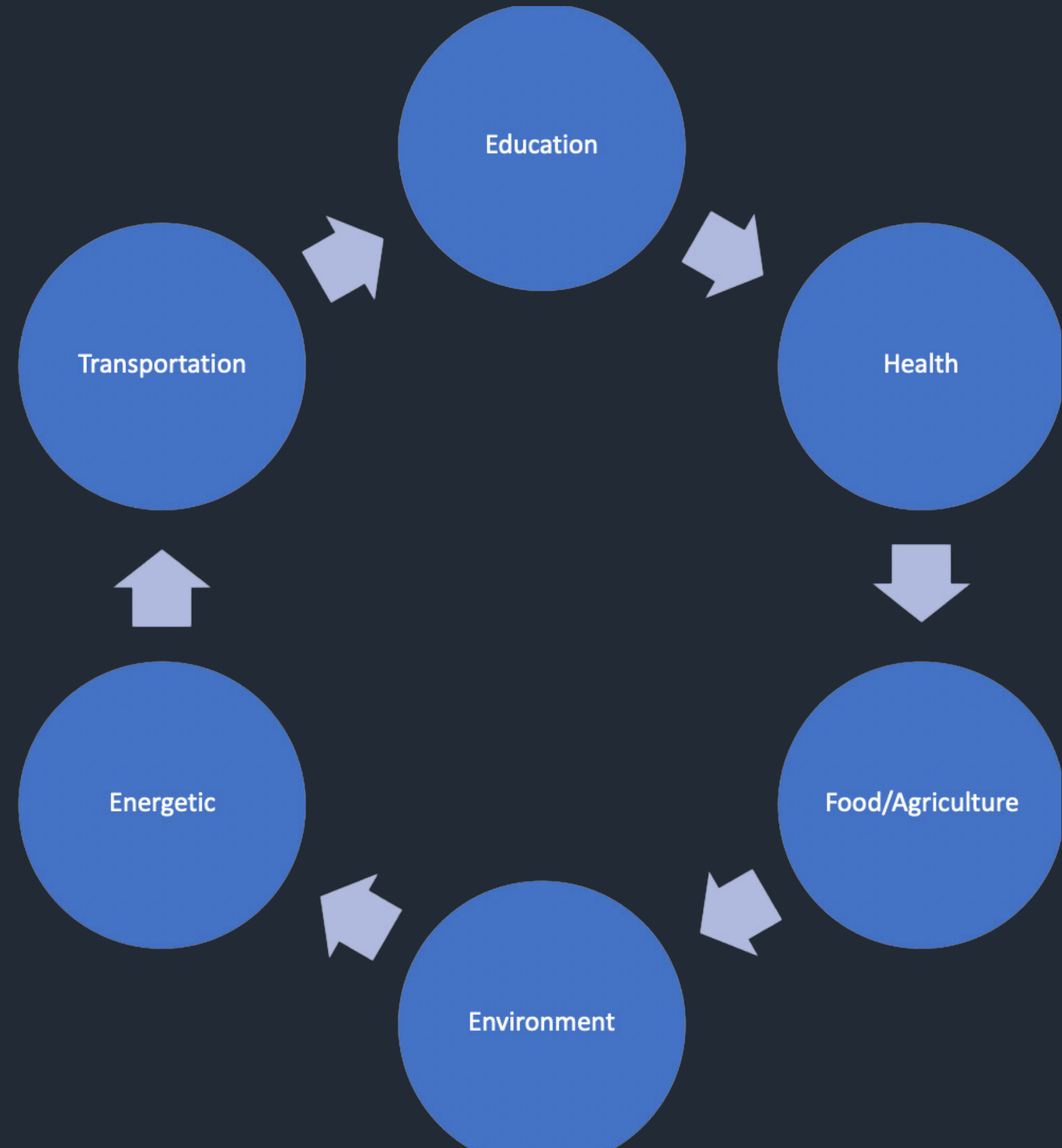
Chemical Characteristics*

CUIVRE/COPPER	(Cu)	%	99.995
SOUFRE/SULPHUR	(S)	PPM	20.5
FER/IRON	(Fe)	PPM	15.3
PLOMB/LEAD	(Pb)	PPM	4.7
TELLURE/TELLURIUM	(Te)	PPM	< 1.5
ETAIN/TIN	(Sn)	PPM	< 1.0
SILICIUM/SILICON	(Si)	PPM	< 1.0
ANTIMOINE/ANTIMONY	(Sb)	PPM	< 1.0
COBALT	(Co)	PPM	0.7
ZINC	(Zn)	PPM	< 0.5
SÉLÉNIUM/SELENIUM	(Se)	PPM	< 0.5
PHOSPHORE/PHOSPHORUS	(P)	PPM	< 0.5
NICKEL	(Ni)	PPM	< 0.5
MANGANÈSE/MANGANESE	(Mn)	PPM	< 0.5
CHROME/CHROMIUM	(Cr)	PPM	< 0.5
CADMIUM	(Cd)	PPM	< 0.5
BISMUTH	(Bi)	PPM	< 0.5
ARSENIC	(As)	PPM	< 0.5
ARGENT/SILVER	(Ag)	PPM	< 0.5

SOCIAL AND ENVIRONMENTAL RESPONSIBILITY

Our concept of **Social and Environmental Responsibility (SER)** integrates social and environmental concerns into business operations and interactions with stakeholders.

The **Environmental and Social Management System (ESMS)** incorporates social and environmental objectives as the ones below indicated:



DRC PROJECT

Smelter Construction

Objectives

Mine Concession for the extraction of ores.
Namely, Copper and Cobalt



Construction of a Copper Smelter facility.

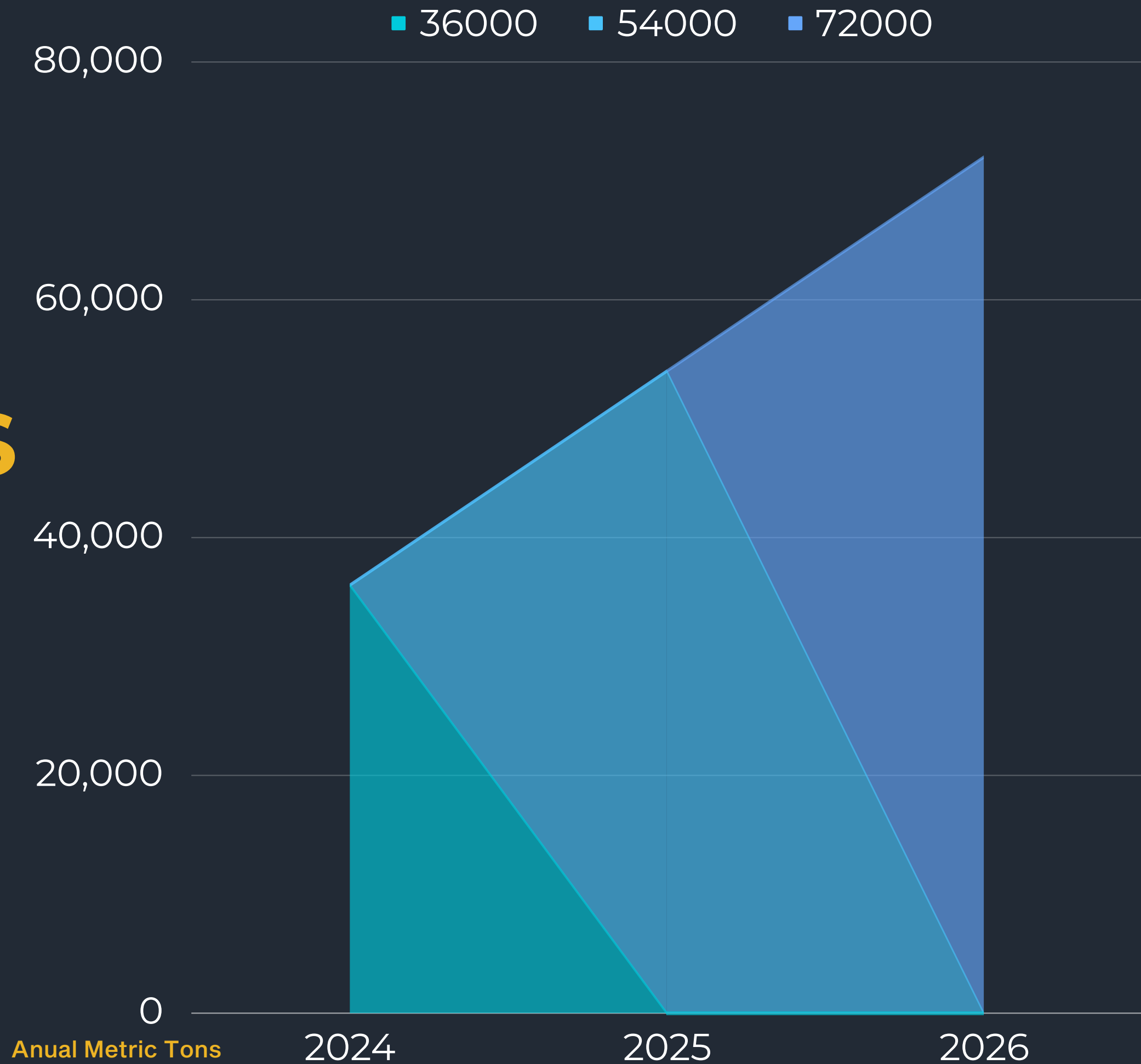


DRC PROJECT

Objectives

COPPER CATHODES

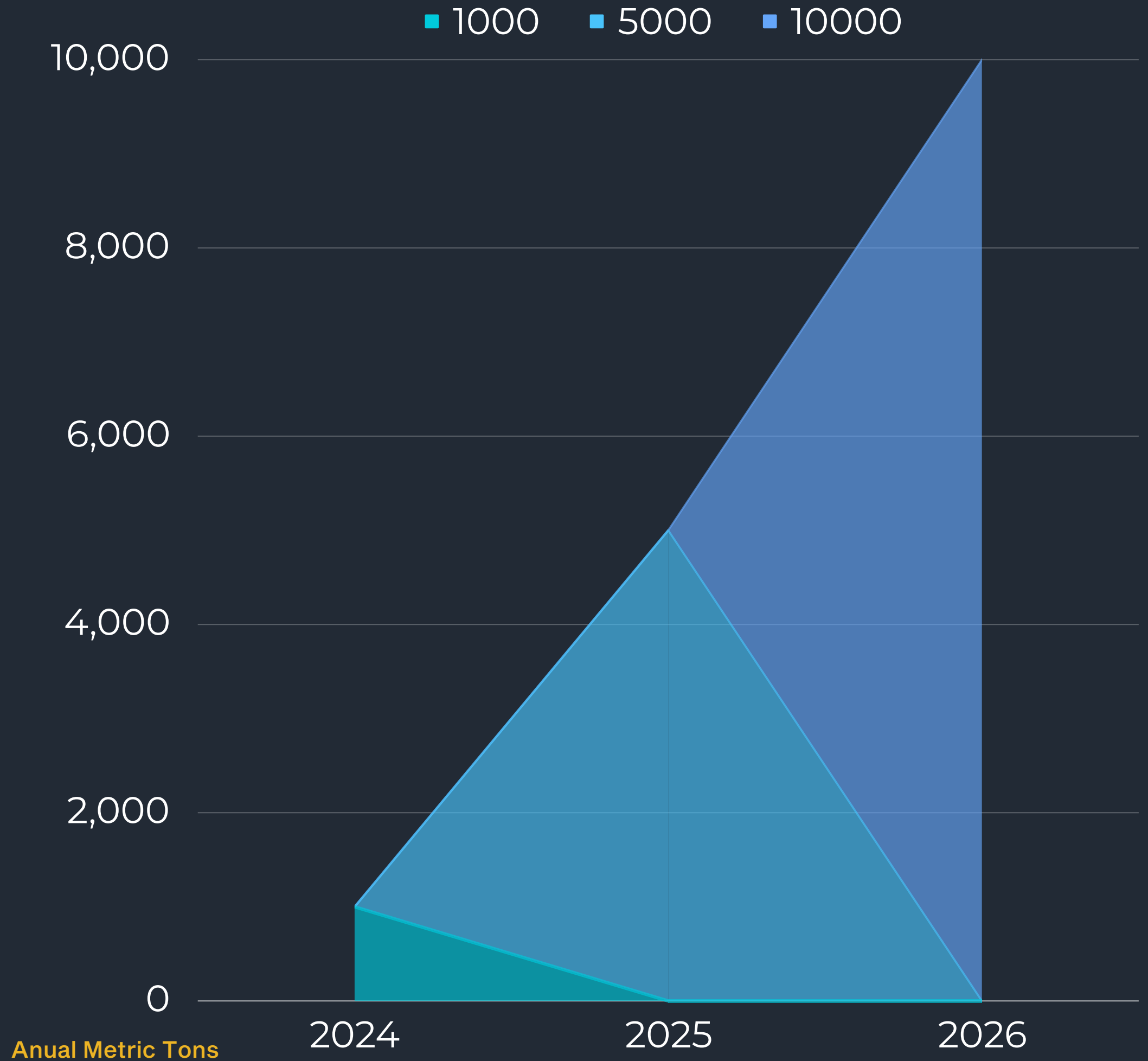
Yearly Growth Plan



DRC PROJECT

COBALT

Yearly Growth Plan





CONTACT US

Address

9825 NE 2nd Avenue
#531416 **Miami Shores,**
FL 33153 USA

+Email: info@expertgroupusa.com
+m.alper@expertgroupusa.com
+Phone: +1 786 210 54 03

